

# DUPLIKEY 7 to 60 ports

The duplicator for USB2 and USB3 pen drives and hard disk drives



DUPLIKEY USB3 is the only duplicator providing USB2 and USB3 formats. It allows duplicating USB pen drives and hard disk drives, copying files and folders in a multitasks environment. Compatible with Windows 7, 8 and 10.

## Software product provides following features:

- Duplication from 7 to 60 devices of any capacity, FAT, FAT32, ExFat, NTFS, Ext2 to 4, HFS, HFS+ formatted (according to installed options in the OS),
- Multitasks duplication for all keys at the same time,
- Audio signal at the end of duplication task,
- Selection of a folder itself with its content, or only items inside this source folder,
- Addition of items in a key without deleting previous content (folders or files),
- Format keys manually (before copying) or automatically (during copy job),
- Check inserted keys and their content,
- Management of copy series, with number of keys to be copied and number of duplicated keys,

KeyDuplicator II 2.0.4

Select USB Keys to be duplicated:  Mark up to 60 volumes 60 / 60

N°	Volume Label	Total	Free	Used	Messages
<input checked="" type="checkbox"/>	1 Volume2	955.457 MB	955.453 MB	4.000 KB	9%
<input checked="" type="checkbox"/>	2 Volume4	955.500 MB	955.496 MB	4.000 KB	11%
<input checked="" type="checkbox"/>	3 Volume5	955.457 MB	955.449 MB	8.000 KB	11%
<input checked="" type="checkbox"/>	4 Volume10	955.457 MB	955.453 MB	4.000 KB	10%
<input checked="" type="checkbox"/>	5 Volume12	955.379 MB	955.371 MB	8.000 KB	9%
<input checked="" type="checkbox"/>	6 Volume3	955.457 MB	955.449 MB	8.000 KB	10%
<input checked="" type="checkbox"/>	7 Volume8	949.457 MB	949.453 MB	4.000 KB	9%
<input checked="" type="checkbox"/>	8 Volume7	955.457 MB	955.449 MB	8.000 KB	11%
<input checked="" type="checkbox"/>	9 Volume14	955.457 MB	955.449 MB	8.000 KB	9%
<input checked="" type="checkbox"/>	10 Volume13	949.457 MB	949.449 MB	8.000 KB	9%
<input checked="" type="checkbox"/>	11 Volume0	955.379 MB	955.371 MB	8.000 KB	9%
<input checked="" type="checkbox"/>	12 Volume40	955.457 MB	955.453 MB	4.000 KB	10%
<input checked="" type="checkbox"/>	13 Volume41	955.500 MB	955.492 MB	8.000 KB	9%
<input checked="" type="checkbox"/>	14 Volume42	949.457 MB	949.449 MB	8.000 KB	11%
<input checked="" type="checkbox"/>	15 Volume43	955.457 MB	955.449 MB	8.000 KB	13%
<input checked="" type="checkbox"/>	16 Volume1	949.457 MB	949.453 MB	4.000 KB	10%
<input checked="" type="checkbox"/>	17 Volume44	949.457 MB	949.453 MB	4.000 KB	9%
<input checked="" type="checkbox"/>	18 Volume45	955.457 MB	955.449 MB	8.000 KB	11%
<input checked="" type="checkbox"/>	19 Volume46	949.457 MB	949.449 MB	8.000 KB	9%
<input checked="" type="checkbox"/>	20 Volume47	955.457 MB	955.449 MB	8.000 KB	13%
<input checked="" type="checkbox"/>	21 Volume16	495.387 MB	495.379 MB	8.000 KB	11%
<input checked="" type="checkbox"/>	22 Volume59	491.262 MB	491.254 MB	8.000 KB	9%
<input checked="" type="checkbox"/>	23 Volume18	494.648 MB	494.641 MB	8.000 KB	9%
<input checked="" type="checkbox"/>	24 Volume21	495.434 MB	495.426 MB	8.000 KB	13%
<input checked="" type="checkbox"/>	25 Volume22	491.262 MB	491.258 MB	4.000 KB	11%
<input checked="" type="checkbox"/>	26 Volume17	491.762 MB	491.754 MB	8.000 KB	9%
<input checked="" type="checkbox"/>	27 Volume20	486.758 MB	486.750 MB	8.000 KB	9%
<input checked="" type="checkbox"/>	28 Volume19	488.258 MB	488.254 MB	4.000 KB	12%
<input checked="" type="checkbox"/>	29 Volume58	479.984 MB	479.977 MB	8.000 KB	13%
<input checked="" type="checkbox"/>	30 Volume23	494.672 MB	494.664 MB	8.000 KB	9%
<input checked="" type="checkbox"/>	31 Volume48	491.762 MB	491.758 MB	4.000 KB	9%
<input checked="" type="checkbox"/>	32 Volume57	495.574 MB	495.566 MB	8.000 KB	9%
<input checked="" type="checkbox"/>	33 Volume50	479.254 MB	479.250 MB	4.000 KB	9%
<input checked="" type="checkbox"/>	34 Volume53	495.574 MB	495.570 MB	4.000 KB	12%
<input checked="" type="checkbox"/>	35 Volume54	491.262 MB	491.258 MB	4.000 KB	9%
<input checked="" type="checkbox"/>	36 Volume49	955.457 MB	955.453 MB	4.000 KB	9%
<input checked="" type="checkbox"/>	37 Volume52	949.500 MB	949.492 MB	8.000 KB	9%
<input checked="" type="checkbox"/>	38 Volume51	955.457 MB	955.453 MB	4.000 KB	11%
<input checked="" type="checkbox"/>	39 Volume56	949.438 MB	949.434 MB	4.000 KB	10%
<input checked="" type="checkbox"/>	40 Volume55	949.457 MB	949.453 MB	4.000 KB	9%

Three hubs 20 ports, that is 60 ports

Duplication parameters

Number of copies: Number of copies to run: 60 Copies done: 0 [Reset]

Source Folder:  Folder included C:\Users\Jean-Luc\Desktop\Divert\ 114.865 MB, 58 files, 5 folders  
 Content only  
 Single file  
 Encrypted data from Data-USBcrypt [Go to] [Define...]

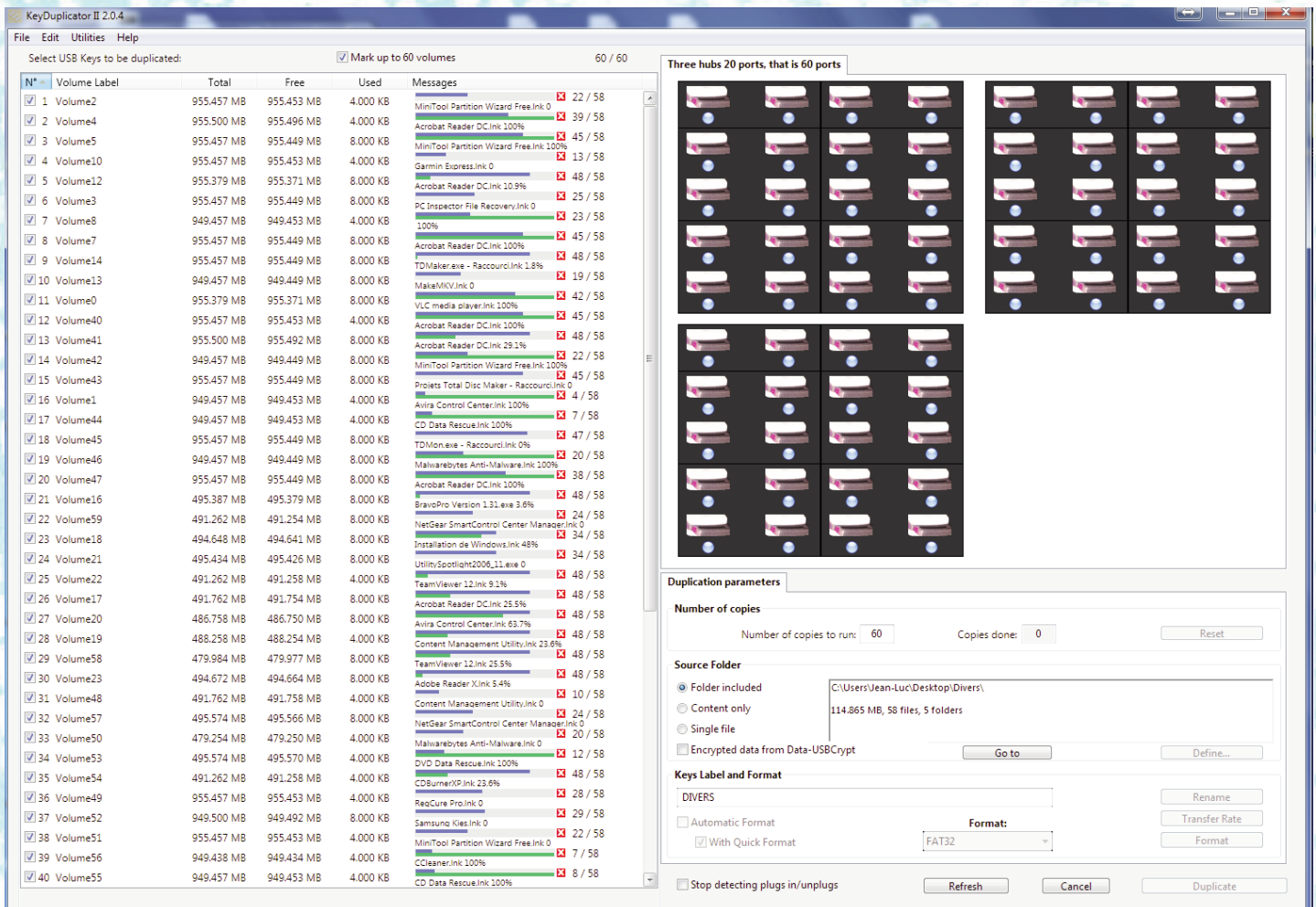
Keys Label and Format: DIVERS [Rename] [Transfer Rate] [Format]  
 Automatic Format [Format]  
 With Quick Format [Format]

Stop detecting plugs in/unplugs [Refresh] [Cancel] [Duplicate]

Low level format of 60 devices



- Complete errors management: our software immediately displays error code when:
  - a/ One or several keys become unavailable (untimely unmounted, bad connection, hardware failure, power cut) during copy job,,
  - b/ One or several keys are write-protected by a Lock switch preventing write operations,
  - c/ One or several keys become full (no more space available).
- Identical files/folders are not copied. Adding files/folders is possible. The goal is to save time, with no risk to delete information....
- Event-driven detection of plugged in and unplugged keys,
- Duplicator and pen drives graphically displayed on screen, with the ability to make one or several keys flash, for example to find which one(s) is(are) in failure,
- Copy with the highest possible speed on the keys, thanks to USB3 and multitasking,



Files/Folders duplication of 60 devices

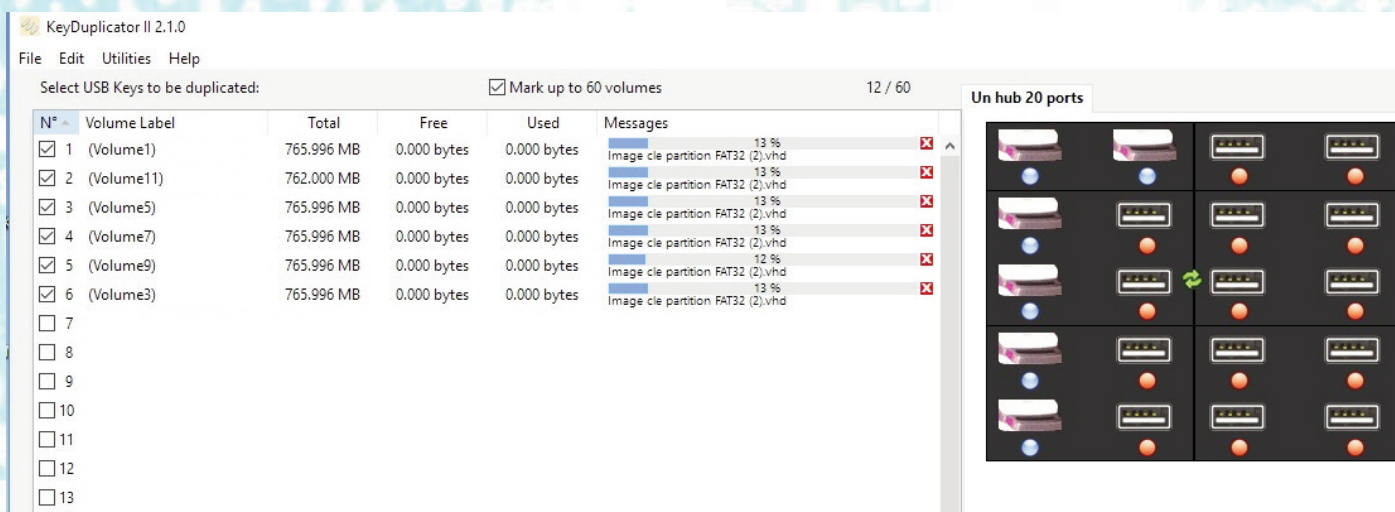
## NEW IN VERSION 2.5.0

This version introduces a new duplication method using a sector-by-sector copy. This leads to making a real clone of your original device.

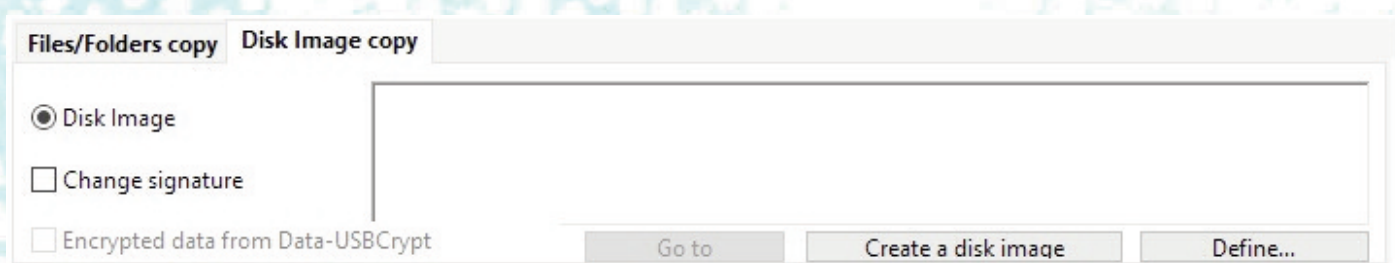
The Disk Image Copy method works with an image of your original device (Pen-drive and other Flash Memories, HDD, ...). KeyDuplicatorII 2.5.0 helps you making this image, simply by selecting the source device. It may be Windows, Linux or Mac formatted, simple or multiple volumes partitioned, even with mixed partition types (i.e. FAT32+NTFS). No needs to install specific drivers for managing non Windows devices, as Image Copy method is able to deal with unmounted devices. At Image restoration time, a real clone of the original device is created, so that it's impossible to mount together the original device and one of its clone, or two clones of the same device. In such a case, Windows OS displays an error message saying there is a Signature conflict problem! This is a normal and expected behaviour. We provide, as a setup, a way to copy devices with a signature change, in order to obtain real clones but the signature and to be able to mount two (or more) of them without conflict.



In addition, Image copy is more reliable and up to 5 times faster than Files/Folders copy.



Disk Image duplication of 6 devices on up to 60



Disk Image duplication parameters

### Duplikey hardware implements following features:

- Hubs with 7 to 20 USB3 connectors vertically laid out and spaced out to connect thick and large, cumbersome devices,
- All these hubs are totally independent one of the others, offering more reliability,
- Every hub has a Power On light and In Use indicator lights for each port,
- Every hub is auto powered, enabling you to use keys with a very high level of electrical power consumption, from 1A to 2A per USB3 port (depending on configuration),
- USB 1.1 (1.0 untested), 2.0 and, of course, USB 3.0 compatibility (1.1 not recommended),
- USB3 extension cable, allowing to connect DUPLIKEY far enough of your PC and within hand reach for comfortable connection and disconnection of keys,
- Including 1, 2 or 3 Fast USB3 PCIe card(s), with high data rate. Cards to be inserted in PC, in order to connect Duplikey system,
- 7 to 60 ports USB System also usable (without copy software) as a very efficient hub receiving all USB devices that you may wish.

This efficient set will allow you to get a very fast profitability on your investment and to save a lot of time in USB keys or disks duplication.

No competitor, today, on connected USB3 duplicators market.

The same set can be used as a duplicator for USB1, USB2 and USB3 hard disk drives, or any USB peripheral device of any size.

While investing today you are sure to keep this product for a while before USB3 standard changes.

- USB 2.0 standard allows transfer rate up to 480 Mb/s,
- USB 3.0 standard provides a theoretical impressive transfer rate up to 4.8 Gb/s.



## Software news in version 2.5.0:

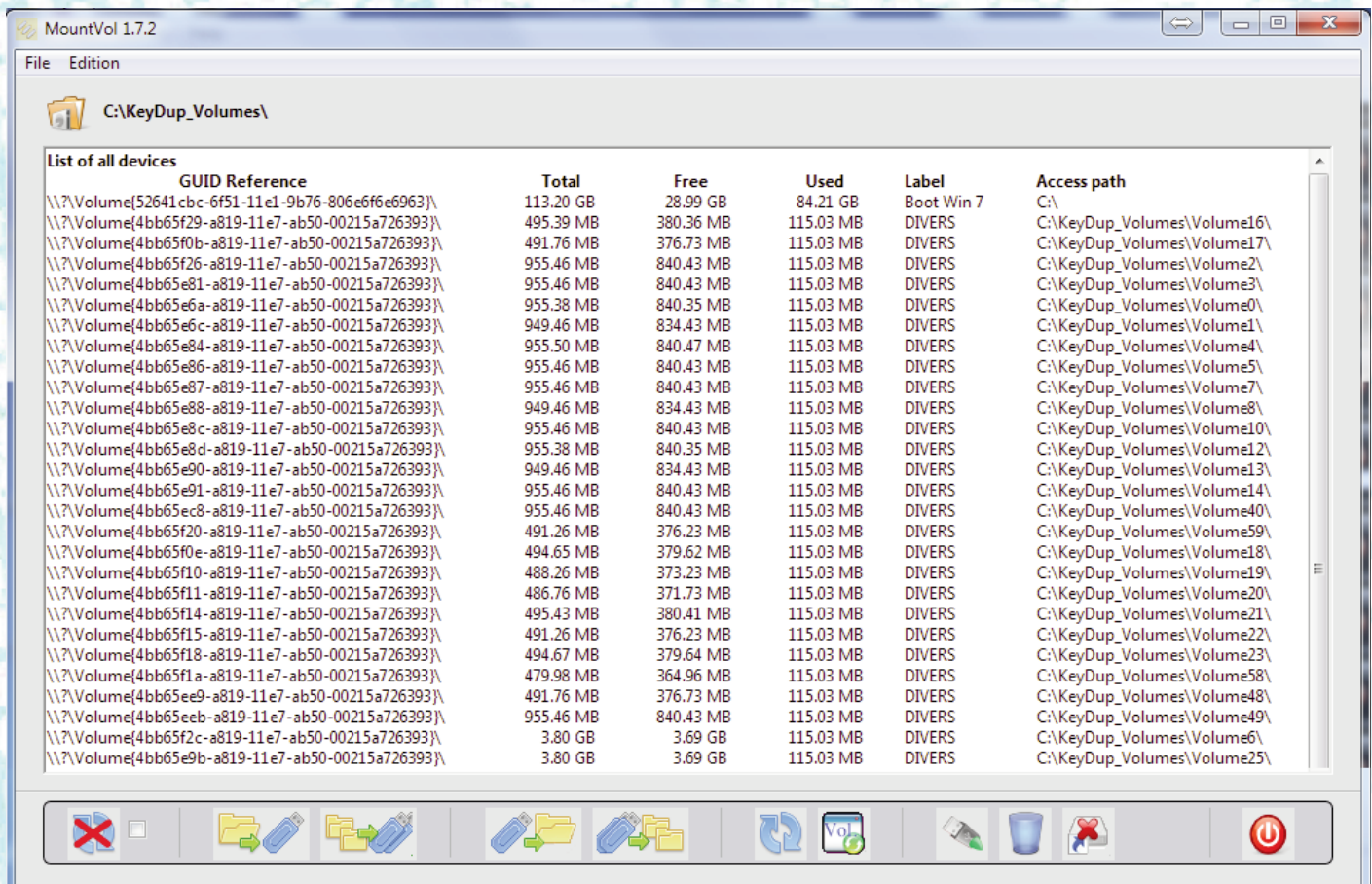
- Mainly, KeyDuplicatorII 2.5.0 provides a new copy method, the Disk Image Copy, in order to realise a real clone of the original device with partition table, partitions and all data.
- Some changes in the GUI in order to integrate the DiskImage Copy method and some new options: Create DiskImage, information about Disk Image, access to unmounted devices.

## Implemented features:

- Event driven detection of plug in/unplug of devices,
- Graphic User Interface with physical location,
- Mountvol Utility, management of volumes mount points,
- Autorun.inf conception with Label and/or device icon,
- USB registries cleanup,
- Duplication of encrypted keys (with our DataUSBCrypt software), ...

## Software news for future versions:

- Automatic startup as soon as the last key is plugged in, or after temporisation (set in Prefs),
- Estimation of duplication duration, including keys performances and plug in/unplug time,
- Complete log file (date, time, device serial number, copy result, error messages, ...),
- Ability to rename one or more files,
- Capability to delete one or several files into all duplicated keys,
- Disk Copy from device to device, avoiding the need to create an Image file. Useful for HDD duplication.
- Duplication duration will be estimated, taking into account keys speed and time needed for plug/unplug operations,
- Automatic or manual updates available via Internet.



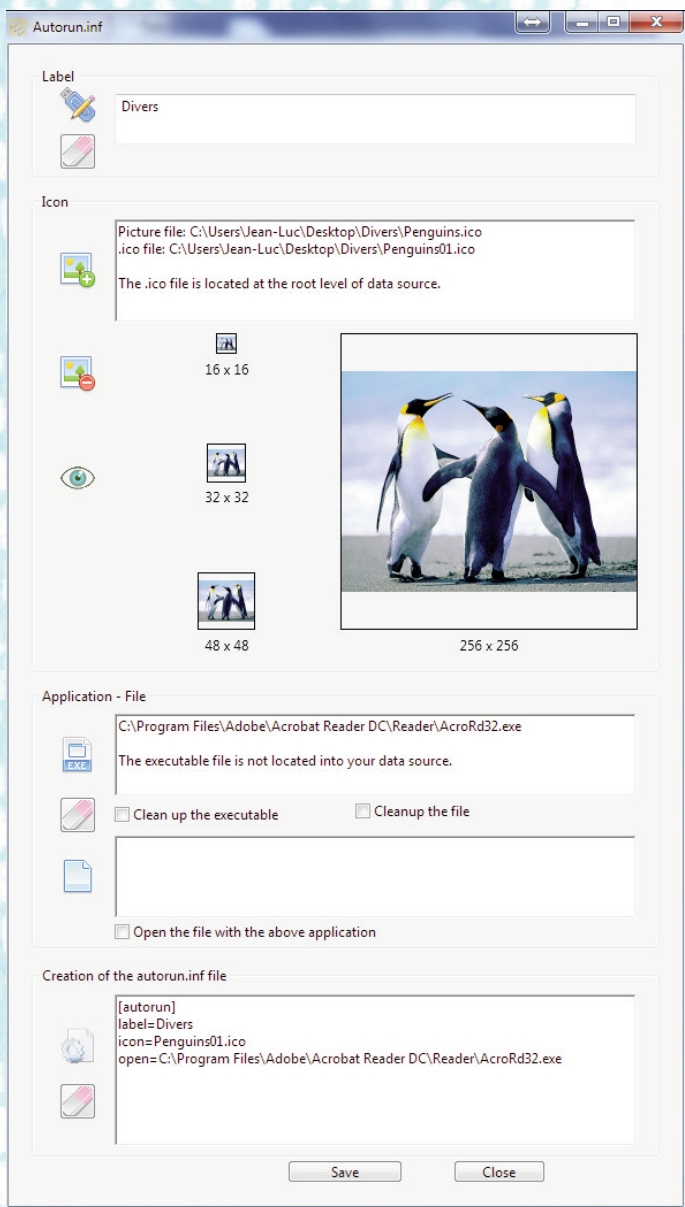
The screenshot shows the MountVol 1.7.2 application window. The title bar reads "MountVol 1.7.2". The menu bar includes "File" and "Edition". The address bar shows "C:\KeyDup\_Volumes\". The main area displays a table titled "List of all devices" with the following columns: GUID Reference, Total, Free, Used, Label, and Access path. The table lists 25 entries, each representing a device with its GUID, storage capacity, and mount point.

GUID Reference	Total	Free	Used	Label	Access path
\\?\Volume{52641cbc-6f51-11e1-9b76-806e6f6e6963}\	113.20 GB	28.99 GB	84.21 GB	Boot Win 7	C:\
\\?\Volume{4bb65f29-a819-11e7-ab50-00215a726393}\	495.39 MB	380.36 MB	115.03 MB	DIVERS	C:\KeyDup_Volumes\Volume16\
\\?\Volume{4bb65f0b-a819-11e7-ab50-00215a726393}\	491.76 MB	376.73 MB	115.03 MB	DIVERS	C:\KeyDup_Volumes\Volume17\
\\?\Volume{4bb65f26-a819-11e7-ab50-00215a726393}\	955.46 MB	840.43 MB	115.03 MB	DIVERS	C:\KeyDup_Volumes\Volume2\
\\?\Volume{4bb65e81-a819-11e7-ab50-00215a726393}\	955.46 MB	840.43 MB	115.03 MB	DIVERS	C:\KeyDup_Volumes\Volume3\
\\?\Volume{4bb65e6a-a819-11e7-ab50-00215a726393}\	955.38 MB	840.35 MB	115.03 MB	DIVERS	C:\KeyDup_Volumes\Volume0\
\\?\Volume{4bb65e6c-a819-11e7-ab50-00215a726393}\	949.46 MB	834.43 MB	115.03 MB	DIVERS	C:\KeyDup_Volumes\Volume1\
\\?\Volume{4bb65e84-a819-11e7-ab50-00215a726393}\	955.50 MB	840.47 MB	115.03 MB	DIVERS	C:\KeyDup_Volumes\Volume4\
\\?\Volume{4bb65e86-a819-11e7-ab50-00215a726393}\	955.46 MB	840.43 MB	115.03 MB	DIVERS	C:\KeyDup_Volumes\Volume5\
\\?\Volume{4bb65e87-a819-11e7-ab50-00215a726393}\	955.46 MB	840.43 MB	115.03 MB	DIVERS	C:\KeyDup_Volumes\Volume7\
\\?\Volume{4bb65e88-a819-11e7-ab50-00215a726393}\	949.46 MB	834.43 MB	115.03 MB	DIVERS	C:\KeyDup_Volumes\Volume8\
\\?\Volume{4bb65e8c-a819-11e7-ab50-00215a726393}\	955.46 MB	840.43 MB	115.03 MB	DIVERS	C:\KeyDup_Volumes\Volume10\
\\?\Volume{4bb65e8d-a819-11e7-ab50-00215a726393}\	955.38 MB	840.35 MB	115.03 MB	DIVERS	C:\KeyDup_Volumes\Volume12\
\\?\Volume{4bb65e90-a819-11e7-ab50-00215a726393}\	949.46 MB	834.43 MB	115.03 MB	DIVERS	C:\KeyDup_Volumes\Volume13\
\\?\Volume{4bb65e91-a819-11e7-ab50-00215a726393}\	955.46 MB	840.43 MB	115.03 MB	DIVERS	C:\KeyDup_Volumes\Volume14\
\\?\Volume{4bb65ec8-a819-11e7-ab50-00215a726393}\	955.46 MB	840.43 MB	115.03 MB	DIVERS	C:\KeyDup_Volumes\Volume40\
\\?\Volume{4bb65f20-a819-11e7-ab50-00215a726393}\	491.26 MB	376.23 MB	115.03 MB	DIVERS	C:\KeyDup_Volumes\Volume59\
\\?\Volume{4bb65f0e-a819-11e7-ab50-00215a726393}\	494.65 MB	379.62 MB	115.03 MB	DIVERS	C:\KeyDup_Volumes\Volume18\
\\?\Volume{4bb65f10-a819-11e7-ab50-00215a726393}\	488.26 MB	373.23 MB	115.03 MB	DIVERS	C:\KeyDup_Volumes\Volume19\
\\?\Volume{4bb65f11-a819-11e7-ab50-00215a726393}\	486.76 MB	371.73 MB	115.03 MB	DIVERS	C:\KeyDup_Volumes\Volume20\
\\?\Volume{4bb65f14-a819-11e7-ab50-00215a726393}\	495.43 MB	380.41 MB	115.03 MB	DIVERS	C:\KeyDup_Volumes\Volume21\
\\?\Volume{4bb65f15-a819-11e7-ab50-00215a726393}\	491.26 MB	376.23 MB	115.03 MB	DIVERS	C:\KeyDup_Volumes\Volume22\
\\?\Volume{4bb65f18-a819-11e7-ab50-00215a726393}\	494.67 MB	379.64 MB	115.03 MB	DIVERS	C:\KeyDup_Volumes\Volume23\
\\?\Volume{4bb65f1a-a819-11e7-ab50-00215a726393}\	479.98 MB	364.96 MB	115.03 MB	DIVERS	C:\KeyDup_Volumes\Volume58\
\\?\Volume{4bb65ee9-a819-11e7-ab50-00215a726393}\	491.76 MB	376.73 MB	115.03 MB	DIVERS	C:\KeyDup_Volumes\Volume48\
\\?\Volume{4bb65eeb-a819-11e7-ab50-00215a726393}\	955.46 MB	840.43 MB	115.03 MB	DIVERS	C:\KeyDup_Volumes\Volume49\
\\?\Volume{4bb65f2c-a819-11e7-ab50-00215a726393}\	3.80 GB	3.69 GB	115.03 MB	DIVERS	C:\KeyDup_Volumes\Volume6\
\\?\Volume{4bb65e9b-a819-11e7-ab50-00215a726393}\	3.80 GB	3.69 GB	115.03 MB	DIVERS	C:\KeyDup_Volumes\Volume25\

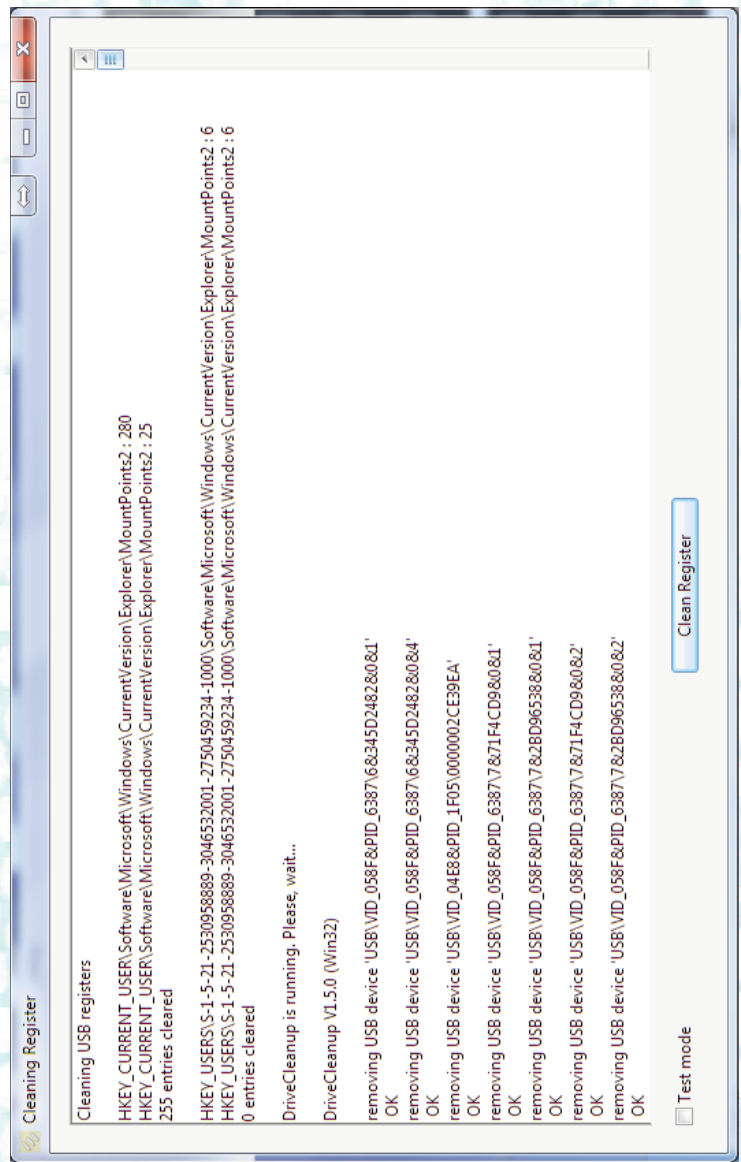
The bottom of the window features a toolbar with icons for file operations, device management, and system functions.

MountVol utility, management of volumes mount points





**Autorun creation utility**



**USB registries cleaning utility**

**Minimum system requirement:**

- Intel Dual-Core Processor , Windows 7, 2 GB RAM, at least one free PCIe slot,

**Recommended configuration:**

- Intel Quad-Core or more, Windows 7 to 10, 4 GB RAM or more, one or two PCIe slot(s),
- Screen resolution 1650 x 1080
- One free PCIe slot (Duplikey7 to 20), two free PCIe slot (Duplikey20 to 40).

**Special 60 ports configuration:**

- Intel i5 or i7, 6 to 8 GB RAM, 3 free PCIe slots, screen height at least 1080 pixels (display 40 lines + scrolling), 1500 pixels at least for 60 lines to be displayed

**Available configurations:**

- |   |   |
|---|---|
| Duplikey7 (7 ports)                     | Duplikey14 (14 ports)                   |
| Duplikey16 (16 ports)                   | Duplikey20 (20 ports, 1 or 2A per port) |
| Duplikey40 (40 ports, 1 or 2A per port) | Duplikey60 (60 ports, 1 or 2A per port) |